

6/24/95

CHAIRMAN'S REMARKS

JUNE 1990

THE YEAR IN REVIEW

The 1989-1990 year for SME chapter 26 involved many changes. We started the year on the controversial bulletin issue. Because the bulletin involves a considerable amount of money and labour, we had disagreements within the executive committee on how it should be operated. After several meetings, we reached a decision to continue with the bulletin and employ Mary K publications as our publisher. Mary K is owned and run by Peter Kondoff our former editor. We are pleased with the current bulletin results.

Our program this year had the theme "Innovation and Entrepreneurship in the 1990's". We held eight of our nine technical meetings on the premises of the speakers' company. The meetings consisted of a tour of the plant with a particular focus on the topic of the evening. I can't really single out any one evening as being the best. They were all excellent thanks to the following companies:

- ▶ Husky Injection Moulding.
- ▶ Tecknion Furniture Systems.
- ▶ Digital Equipment Corp.
- ▶ Canadian General Electric.
- ▶ Northern Telecom.
- ▶ Boeing Dehavillands Aircraft.

We covered many subjects including: simultaneous engineering, employee involvement, product design of lights and plastics, facilities planning for JIT, CAD/CAE/CAM in mold making. Our turnout at the meetings ranged from 25 to 75. Many of our meetings were shared with other societies and chapters including:

- ▶ Canadian Society for Industrial Engineering.
- ▶ Canadian Association of Production and Inventory Control.
- ▶ C.A.S.A./SME Chapter 286.
- ▶ American Society of Mechanical Engineers Toronto Section.

We couldn't have accommodated anymore attendees on these occasions. However, I'm still puzzled at the lack of interest of the other 470 members of our chapter. Please give us feedback as to what might get you to come out. The quality of these presentations has been equal to those given at seminars that cost hundreds of \$.

The executive meetings have been very lively with a regular attendance of 12 - 15 people. We held them at Peat Marwick Stevenson & Kellogg at Yonge and Eglinton. Everyone has enjoyed pizza and soft drinks. We even managed to hold a two hour executive meeting during the blackout -- 15 people around a table in pitch black. We celebrated our 50th anniversary at the annual dinner dance at the Radisson hotel. Some 150 people attended. Thanks to Jenny Ono's efforts we received the

CHAIRMANS REMARKS

JUNE 1990

THE YEAR IN REVIEW

2

donation of a personal computer from Apple Canada Inc. We are sincerely grateful at this gesture by Apple. The certification program in the chapter has been a flop. There seems to be no interest in gaining the designation Certified Manufacturing Engineer. We believe the reason is the lack of recognition by the professional bodies in Ontario and Canada. After conducting a preliminary review of the exam requirements for the CMfgE, we determined it to be equivalent to a 2 year technician course at a community college. This of course is considerably far behind the requirements for a Professional Engineer in Ontario. By this estimate it would require a further 4 years full time engineering studies to reach the (BSc Eng) professional engineer level. We intend to push SME to upgrade this program.

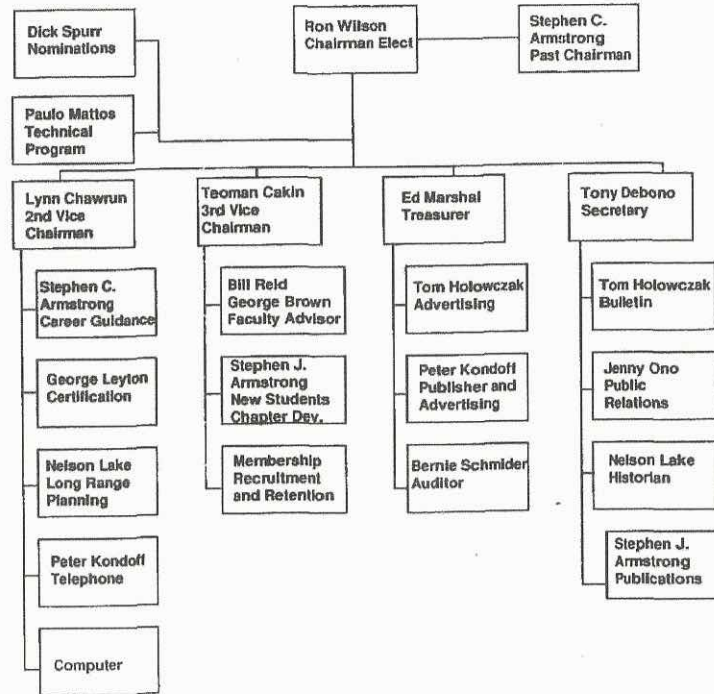
1989-1990 has been the most successful to date for the student chapter at George Brown College. We have been very impressed by the chairman Richard Archer and his team. All have been actively involved at the senior chapter executive meetings. Many excellent events were put on by the students. We also attracted several new members to the executive. They bring many years of education and varied work experience to the chapter management. I am excited about the 1990-1991 program.

Financially the chapter is very strong. Since 1985 we have achieved approximately 600% growth. The books have been kept excellently by Ed Marshal. Ed received the presidents award for service because of his efforts. I was very honoured to receive the 1990 Young Outstanding Engineer Award from SME. It was presented to me at the Los Angeles convention centre in March as part of the WESTEC convention. I have enjoyed the chairmanship immensely. It is a challenge to motivate and lead a group of volunteers. In addition, the executive group spans several generations, has varied cultural/ethnic roots and educational levels. This mix of people provides tremendous exposure and training in the management of people. I recommend it very highly to those of you who have ambitions toward management.

I would like to express my thanks to all the executive members for the support you have given me throughout the year. Finally, I would like to thank my company Peat Marwick Stevenson & Kellogg for its support to the chapter. I look forward to the activities in the 1990-1991 session and wish you all the best.

Stephen C. Armstrong
Chairman Chapter 26

SME CHAPTER 26 ORGANIZATION CHART
1990/1991



CHAIRMAN'S REMARKS
JUNE 1990
THE YEAR IN REVIEW

6/29/95